



FUNDACIÓN **MAPFRE**



GLOBAL
ROAD SAFETY
PARTNERSHIP



ASSOCIATION
DEFENDING INSURED AND
HARMED IN ACCIDENTS



MOVING
International Road Safety Association e.V.



Folksam



p.a.u.
education

midt
regionmidtjylland

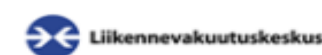
CHALMERS



CERTH

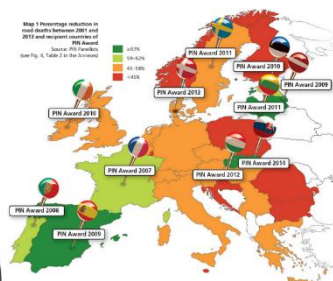


UNIVERSITY OF
BIRMINGHAM

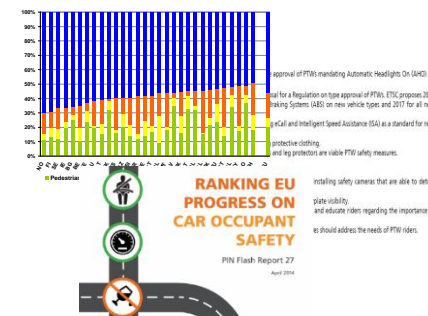




Monitoring EU transport safety policy



Benchmarking and analysing over 32 European countries' road safety performance



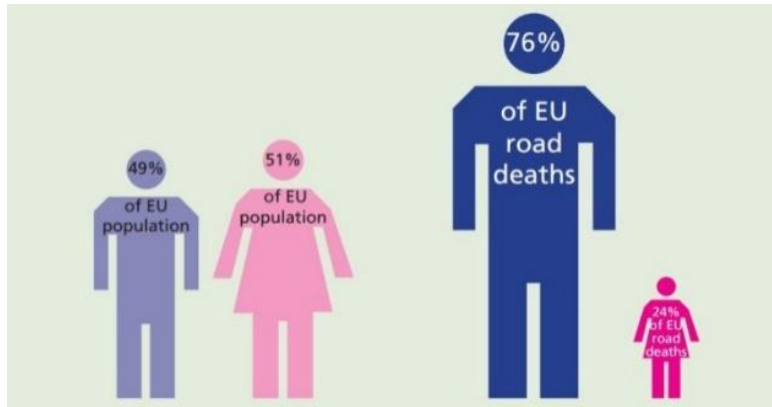
Developing European Road Safety projects and research network



SAFE & SOBER



25,845



People killed in the EU28 in 2014 as a consequence of road collisions (over 54,000 in 2001)

Over **358,000** men and **113,000** women have been killed in the EU27 in the past decade.

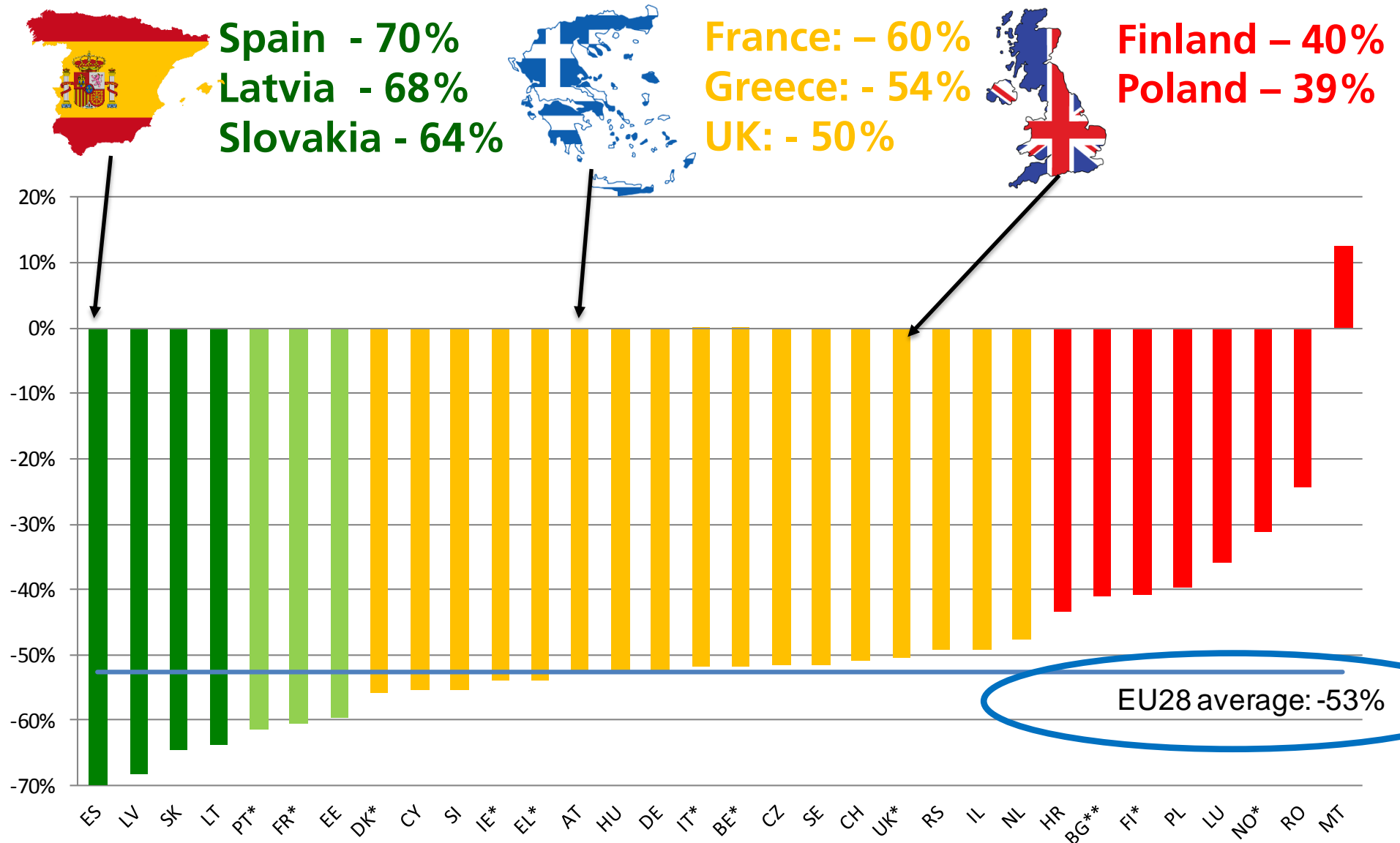
199,000

People recorded by the Police as seriously injured* in the EU28 following traffic collisions in 2013

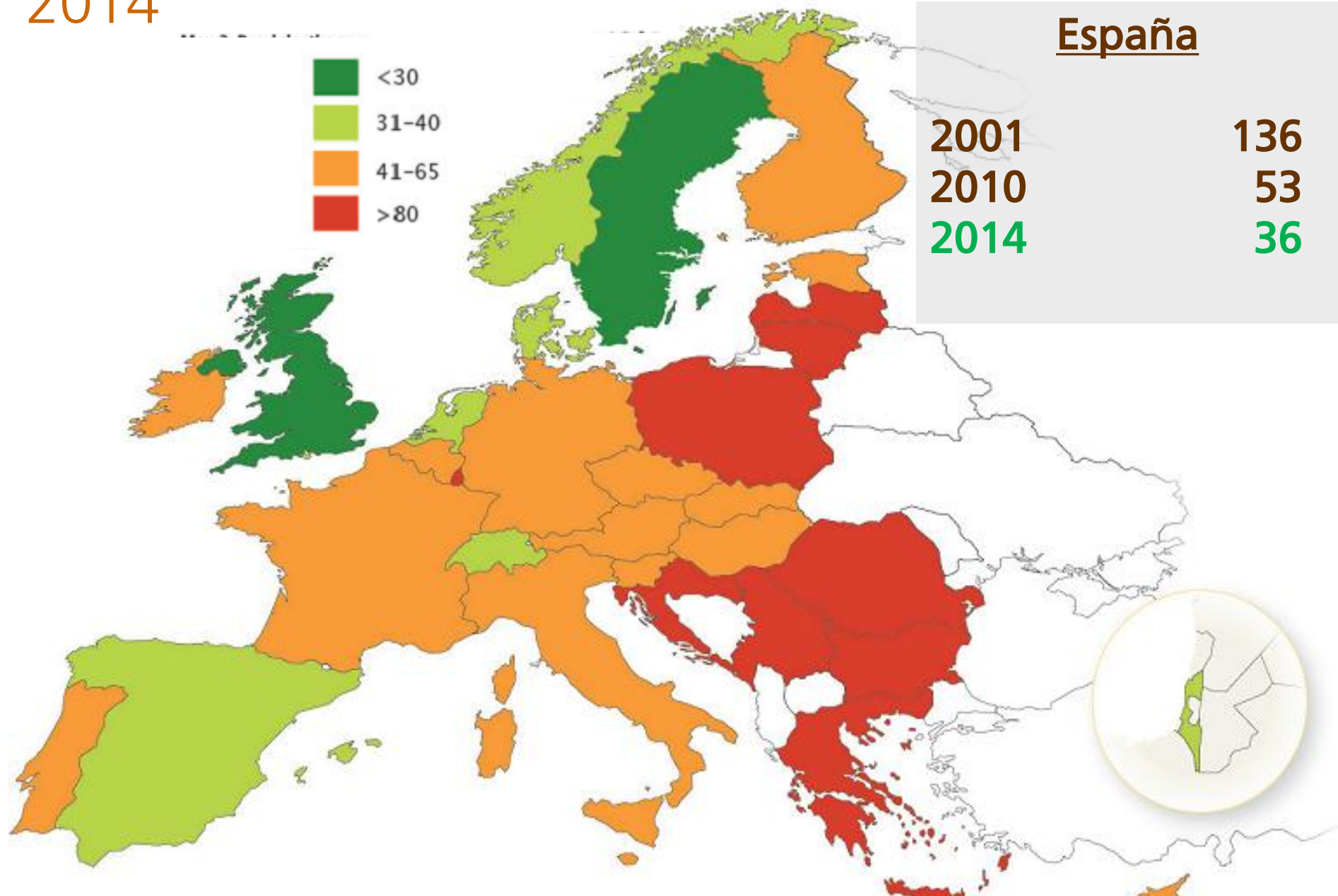
**according to their national definitions*

1 death, **11** serious injuries, **40** slight injuries

Progress in reducing road deaths since 2001



Numero de muertos por millón de habitantes 2014



PRAISE

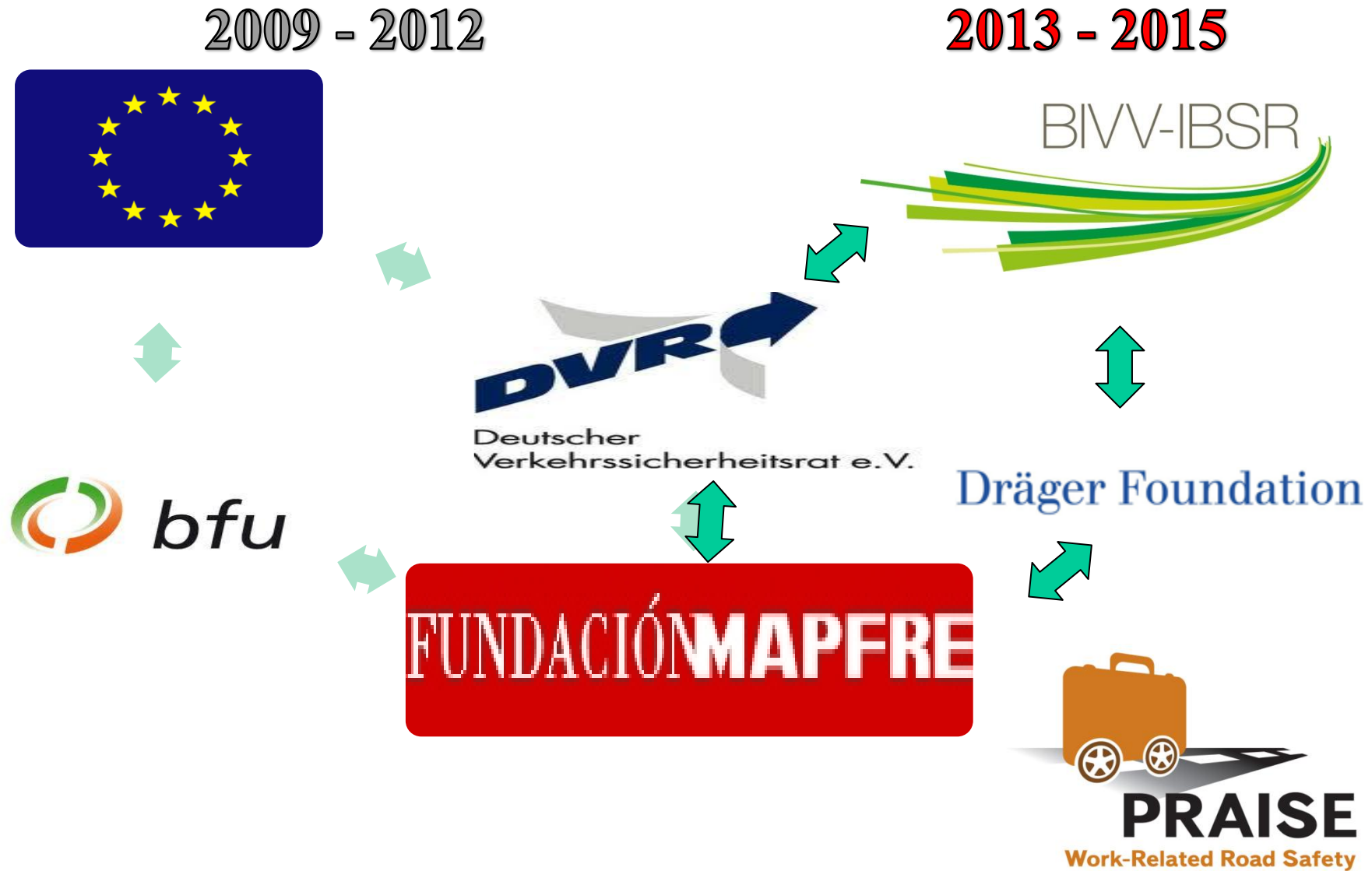


PRAISE: Preventing Road Accidents and Injuries for the Safety of Employees

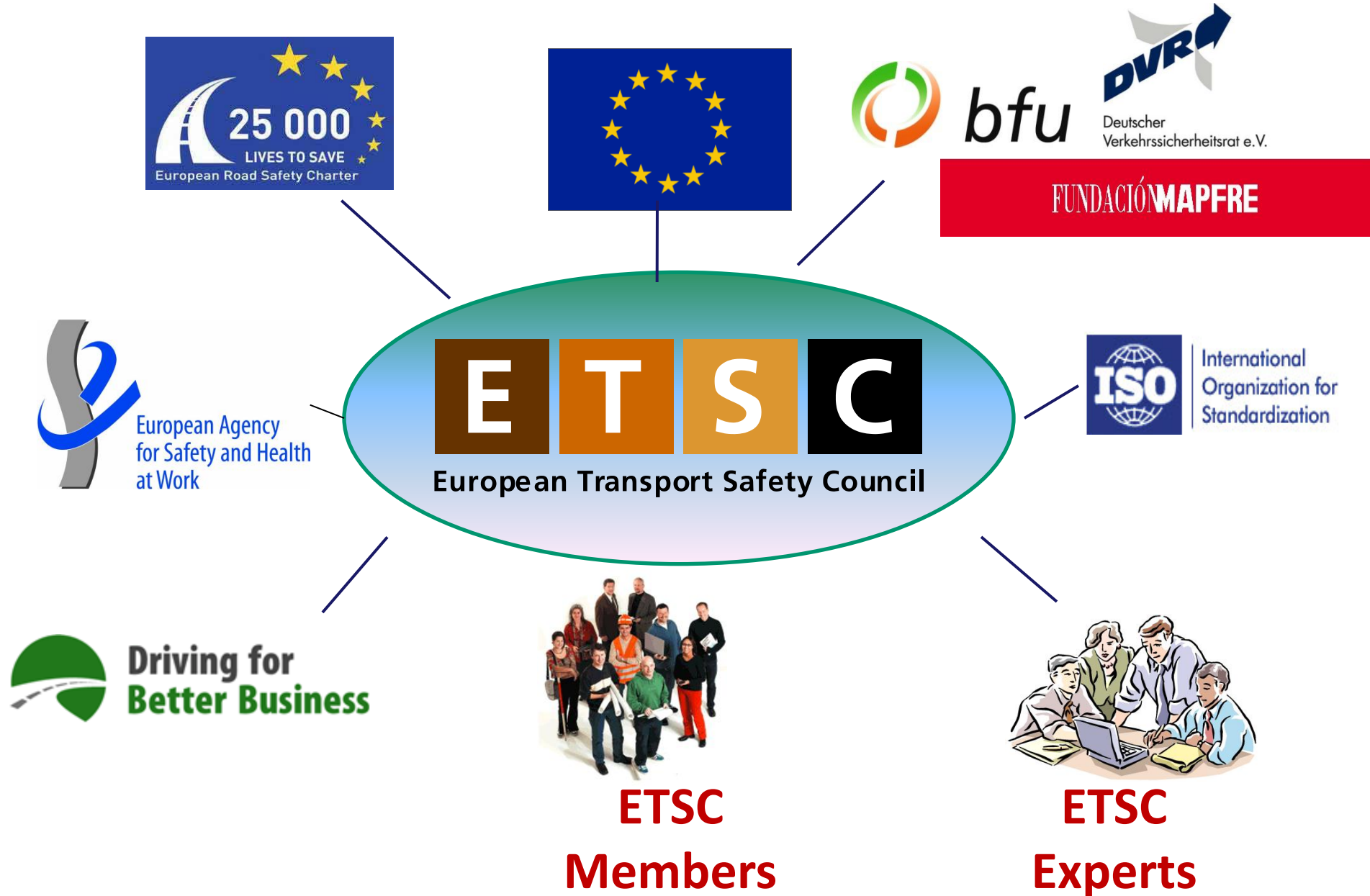
Aims:

- To advance the knowledge of the need for work-related Road Safety Management.
- Examine the work-related road safety standards of EU Member States and carry out advocacy work at the EU level

PRAISE Committed Sponsors



Partnerships



PRAISE Deliverables

- Thematic Reports
- Handbook
- Fact Sheets
- Awards
- Brunches
- Country Seminars
- Advocacy



Safer Commuting to Work

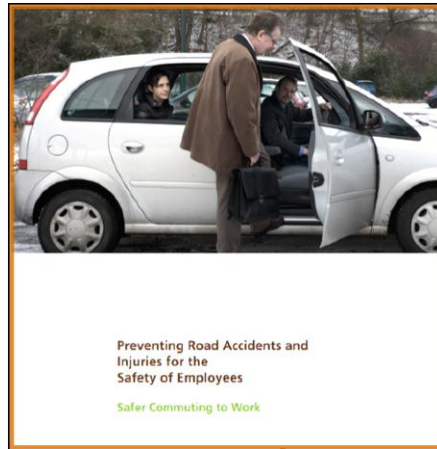
PRAISE is a project co-funded by the European Commission and implemented by ETSC on Preventing Road Accidents and Injuries for the Safety of Employees (PRAISE). The project aims to advance work-related Road Safety Management and provide the know-how to employers who have to take on that challenge. It also aims to present the work-related road safety standards of EU Member States and carry out advocacy work at the EU level: work-related road safety is an area of road safety policy that clearly needs renewed political commitment.

PRAISE Handbook - Themes

11 Thematic Reports

- Work Related Road Safety Management Programmes
- In-vehicle Safety Equipment
- From Risk Assessment to Training
- Fitness to Drive
- Safer Commuting to Work
- Minimising In-Vehicle Distraction
- Road Safety at Work Zones
- Fatigue: EU Social Rules and HGV Drivers
- Driving for Work; Managing Speed
- Business Case for Managing WRRS
- Road Risk of Van Fleets

Resources & Recommendations



- What's the problem with Van Fleet
- Safety Record of vans
- The business case for safer van transport
- Legal framework
- Safer Drivers
- Safer Vehicles
- Safer Journeys
- Killer Behaviours - Specific Risks
- ETSC Recommendations

- Overview & Definitions
- Road Safety Risk
- Possible solutions
- Good Practice examples & Case Studies
- EU, National and Employer level recommendations

PRAISE Success Stories

- **FREDSO VOGNMANFORRETNING**

Haulage company Fredsø Vognmandsforretning, based on the island of Mors in Denmark's North Jutland region, has bought and installed alcolocks in all of its trucks: 25 in all.

- Fredsø Vognmandsforretning Introduction
- Interview with Benny Nielsen
- Road Safety management at Fredsø Vognmandsforretning
- Questions about alcohol and alcolocks
- The Business Case



PRAISE European Competition

- Annual Award to employers (SME, larger and public) for outstanding contribution in the field of work related road safety.

PRAISE Awards

- Royal Dutch Shell
- VolkerRail Ltd.



- Recognition of efforts
- Press coverage
- Exchange of best practice with other companies at an event in Brussels
- New business opportunities: public tenders...
- Employee satisfaction



PRAISE European Competition

**PRAISE 2014 – Large
Company Winner – Arriva
Denmark**

**PRAISE 2014 – Public
Authority Winner – HAF
Greece**

**PRAISE 2014 – SME Winner –
Bolk Transport**

**PRAISE 2014 – Highly
Commended – Antwerp Port
Authority**

**PRAISE 2014 – Highly
Commended – Unilever Poland**



FORBRUG & LIV
Bolig Sundhed Digitalt Forbrug Biler Livsstil

Arriva: Busserne er begyndt at køre pænere

Antallet af 'hændelser' målt af sensorer i busserne er faldet med 67 procent.



Overview

“Managing young drivers should be an important part of managing road safety at work”

- ‘The challenge’ of managing young drivers at work
- EU legislative imperative
- Key risks factors and how to address them
- How to manage young drivers’ road safety at work
- Training and qualifications
- In-vehicle technologies to support safer driving standards
- Recommendations to EU institutions and Member States

Contributing Experts

Acknowledging the invaluable contributions of:

Nicola Christie - University College London

Fernando Rodríguez Camarero –
Fundacion Mapfre

Emmanuelle Dupont – Belgian Road Safety
Institute

Jacqueline Lacroix - German Road Safety
Council

Will Murray - Interactive Driving Systems

Deirdre Sinnott McFeat– Health & Safety
Authority, Ireland



**MANAGING
YOUNG DRIVERS
AT WORK**

Road Collision Harm landscape in the EU

It is estimated that in Europe 6 out of 10 work accidents resulting in death are road crashes, including both crashes while driving for work and commuting [Eurogip]

9,150 young people killed in 2011

It is estimated that 40% of all road crashes involve people 'on duty' and people driving to work or returning from work. [ORSA]

18,670 young people killed in 2001

Young people have the highest collision involvement of any road user group [PIN analysis]

Especially young males

140,000 young people killed on EU 27 roads [2001 to 2010]

What do we know about young drivers ?

9,150 young people aged 15 to 30 killed in road collisions in 2010.

69% higher road mortality rate for young people.

168% higher for young males.

Young drivers at work

- The incident rate of young workers (18-24) was almost **41 %** higher than for older worker in the land transport sector in 2012 (Eurostat)
- The rate of work-related road collisions decreases **with age**, according to a study by the Belgian Road Safety Institute.

The EU Legal Imperative for Employers

89/391/EEC

[Framework Directive on Safety Health & Welfare at Work]

Employer duty of care

**Employee
duty of care**

**Safe place
of work
[Vehicle]**

**Safe
systems of
work**

**Assess and
Control Risks**
**Risk
assessment**
**Principles of
Prevention**

**Policy
Procedures**

**Instruction
Information
Training**

**Safe
work
equipment**

**Work
Safely**

Other EU regulations

- **Road Safety**
- **Driver Training**
- **Directive 94/33 EC** on protecting young people at work
- **Special provisions on**
 - Working hours
 - Night work
 - Rest periods
 - Annual leave.

Addressing key risk factors

Young drivers are more susceptible to all major driving risk factors, mostly because their lack of experience.

The main road safety risks:

- speeding,
- drink driving,
- drug use,
- distraction,
- seat belt use

Work specific risk factors:

- fatigue,
- stress,
- Commuting,
- Work patterns
- Work type

SPEEDING

- A primary factor in about **1/3 of fatal and serious collisions** and an aggravating factor.
- **The 18-24** are the most likely to find speeding acceptable (SARTRE project).
- The **work-driver effect**.



Drink Driving and Drug Use



- Lower tolerance of alcohol and underestimation of their level of intoxication;
- Driving is more demanding for novice drivers;
- More common use of drugs during leisure time, and remaining effects during working hours.



Fatigue



Stress



Distraction



- About 16% of road collisions are sleep related and young drivers are more likely to be involved in it;
- Work-driver effect: time pressure etc;
- Young people tend to lead technology-friendly lifestyles;

Commuting



- Increased commuting distances across the EU, due to the economic crisis;
- A German study shows that the risk of commuting collision is higher for young drivers up to 25 and for women.
- Higher collision risk at night.

Recommendations to employers

Speeding

- Assess employee competence and needs when selecting vehicle type
- Limiting technologies
- Clear speed policy advocating appropriate speeds.

Drink Driving and Drug Use

- Adopt a zero tolerance approach, inform and educate
- Clear written internal policies, screening, clear consequences for non-compliance
- Alcohol interlocks in commercial vehicles.

Recommendations to employers

Fatigue, stress and distraction

- Realistic journey planning and schedules
- Breaks and overnight accommodation
- Clear policy against use of mobile phones and other electronic devices

Commuting

- Adapt working hours;
- Provide information about the traffic conditions and the best way;
- Reduce unnecessary journeys;
- Incentivise public transport

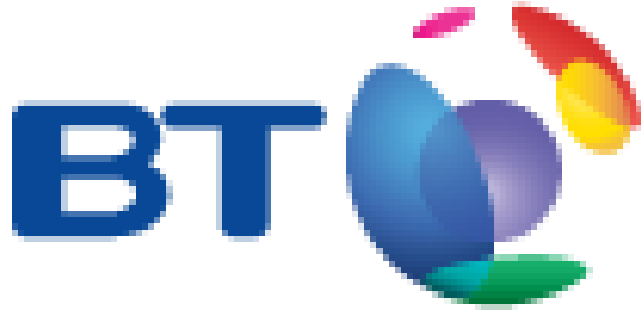
Management, Monitoring and Evaluation

- Commitment of top management for a WRRRM programme;
- Young drivers are strongly influenced by peers;

Recommendations to employers

- Risk assessment taking age into account
- Data collection
- Safety culture
- Internal communication, clearly defined sanctions, rewarding;
- Targets, clear plan of action, measure of key performances indicators.
- Driving part of the recruitment process when necessary
- Avoid unnecessary journeys and choose the safest mode.





British Telecom

- **Managing its road risk:** Follow UK Health and Safety Executive Guidance
- **A 14-point strategy based on the Haddon Matrix :** management culture, journey, vehicles...
- Training to support **gradual access to vans** for new recruits
- **Induction courses** which focus mainly on young drivers, apprentices and new starters



Training and qualifications

During the initial driver training

- Extra module on driving for work
 - Improve hazard perception skills
 - What is a “good” Graduated Driving Licence ?
- Create safe drivers, not only technically competent.

Post driver training and qualifications

- To drive other vehicles types and in other contexts;
- Driving a delivery route requires specific skills (route planning, regular stops, time schedule...)





Arriva Denmark

- **Mentoring program** for their bus driver trainees
- **Structured introduction program** for all new drivers
- **Coaching** for every driver that need it
- **Rewarding** safe drivers

Electricity Supply Board

- **Specific driver training program** for young employees



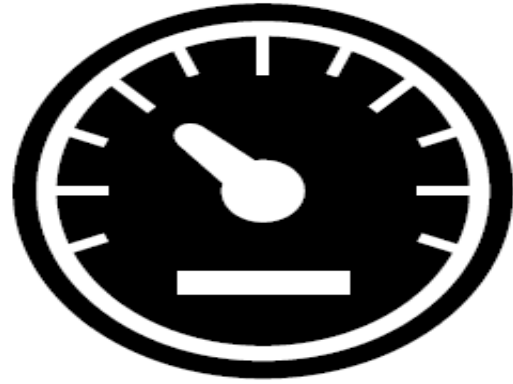
In-vehicle technologies



- Intelligent Speed Assistance (ISA)
- Event data recorders
- Alcohol interlocks
- Safer vehicles



Employers have the power.....
to change cluster of unsafe behaviours around
driving for work



FIND OUT MORE

www.etsc.eu



@etsc_eu



Publications

For earlier PRAISE publications, please see the [archive](#) of the previous PRAISE project website.



Managing the Road Risk of Van Fleets

The purpose of this report is to give an overview of van safety issues in Europe, and to encourage...



Managing Road Risk at Work – Case Study: ESB

Case study: ESB ETSC's PRAISE project addresses the safety aspects of driving at work and driving to work. Its aim...



The Business Case for Managing Road Risk at Work

This report gives an overview of the business case for employers to invest in a Work-Related Road Risk Management (WRRRM) programme....



Managing Young Drivers at Work

May 28, 2015 Publications

Organisations are increasingly aware of the business case for introducing road safety management programmes to reduce work-related road risk. The many benefits include cutting preventable injuries, mitigating losses associated with collisions and boosting corporate social responsibility efforts. The focus of this report is to give an overview of the issues specific to managing young drivers at work. Evidence shows that young people have the highest collision involvement of any road user group. This report looks into the direct and indirect factors associated with higher [...]

Events

Past events can be browsed on the [archive site](#).



13 October 2014 – European Conference on Work-Related Road Safety, Brussels

The 4th Annual European PRAISE Conference on work-related road safety. Download the agenda here. Read the press release. Presentations...



25 June 2014 – Identify, Evaluate and Prevent Occupational Road Risks, Brussels

The Belgian Road Safety Institute and the European Transport Safety Council (ETSC) co-organised a seminar in Brussels on managing...



12 June 2014 – Managing Road Safety Risks, Bilbao

The Mapfre Foundation and the European Transport Safety Council (ETSC) held a seminar in Bilbao on managing work-related road...