

# Work related road safety trends and analysis in Belgium

PRAISE

Madrid - October 1, 2015

BRSI



# Impact of work related road accidents

## Study

- ▶ conducted by **BRSI**
- ▶ support of **the Fund for Occupational Accidents**
- ▶ analysis of 81.080 accidents (*period 2008-2012*)

## Objectives

- ▶ estimate number of work related road accidents
- ▶ different from other occupational accidents?
- ▶ different from other road accidents?

# Impact of work related road accidents

## Questions

Is there a difference between...

- ▶ severity work related road accidents vs. occupational accidents ?
- ▶ work related road accidents during commuter traffic vs. during work trips ?
- ▶ victims work related road accidents vs. other road accidents ?

---

Impact of work related road accidents  
**Results**

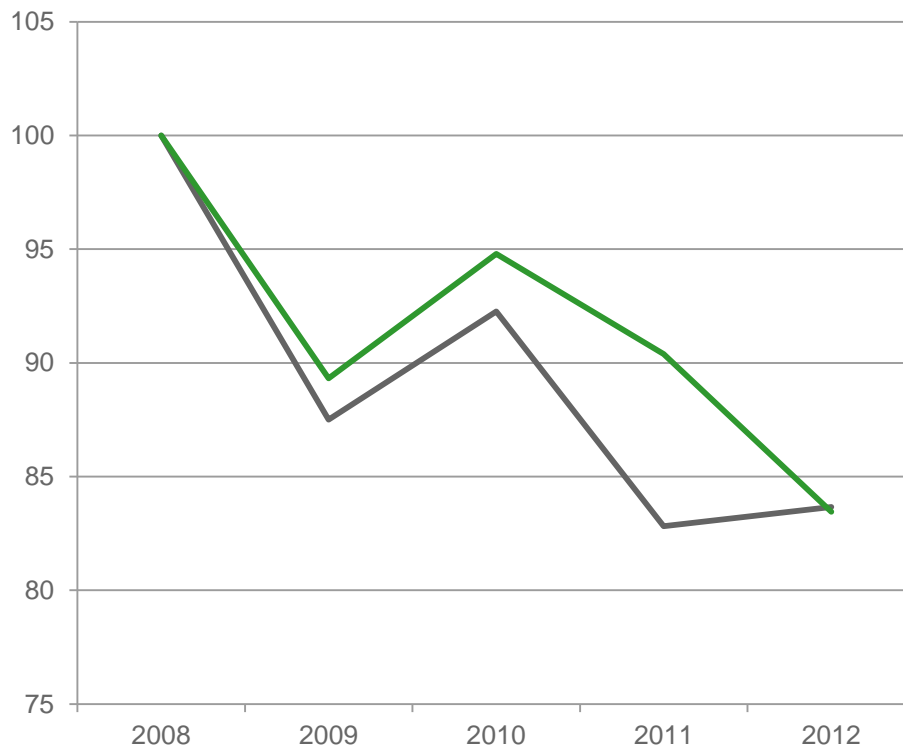
# Impact of work related road accidents

## Global results

- ▶ almost **1 in 10** occupational accidents = work related road accidents (9,4%)
- ▶ **48,8%** = fatal work related road accidents
- ▶ severity of occupational accidents = 93,1  
severity of work related road accidents = **130,7**
- ▶ **84%** during commuter traffic  
16% during work trips
- ▶ severity commuter traffic = 129,7  
severity road trips = **138,8**

# Impact of work related road accidents

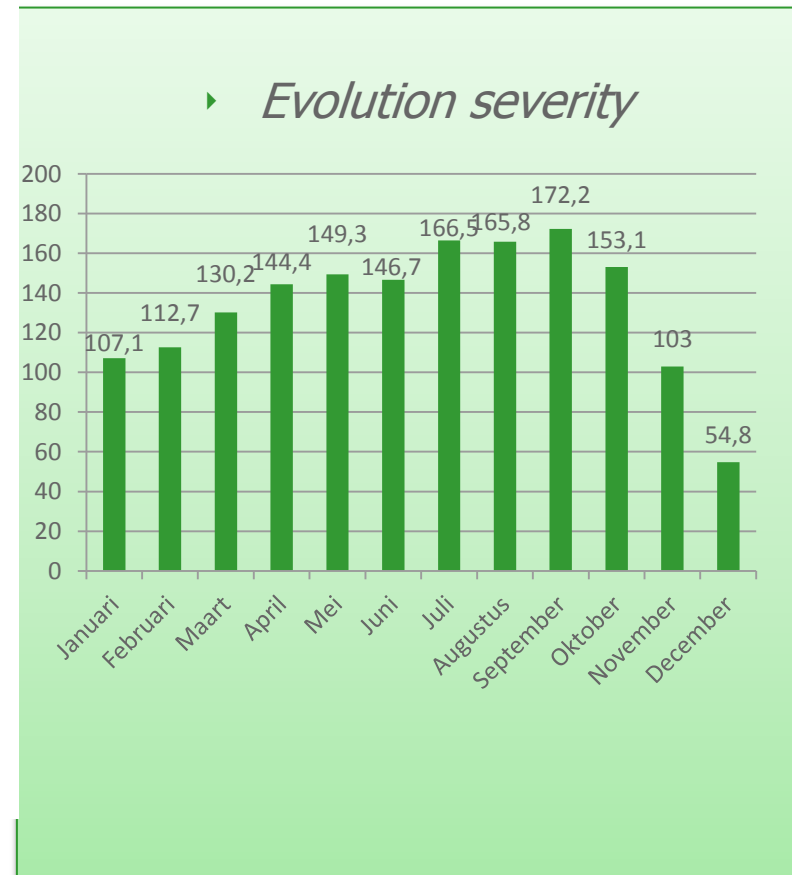
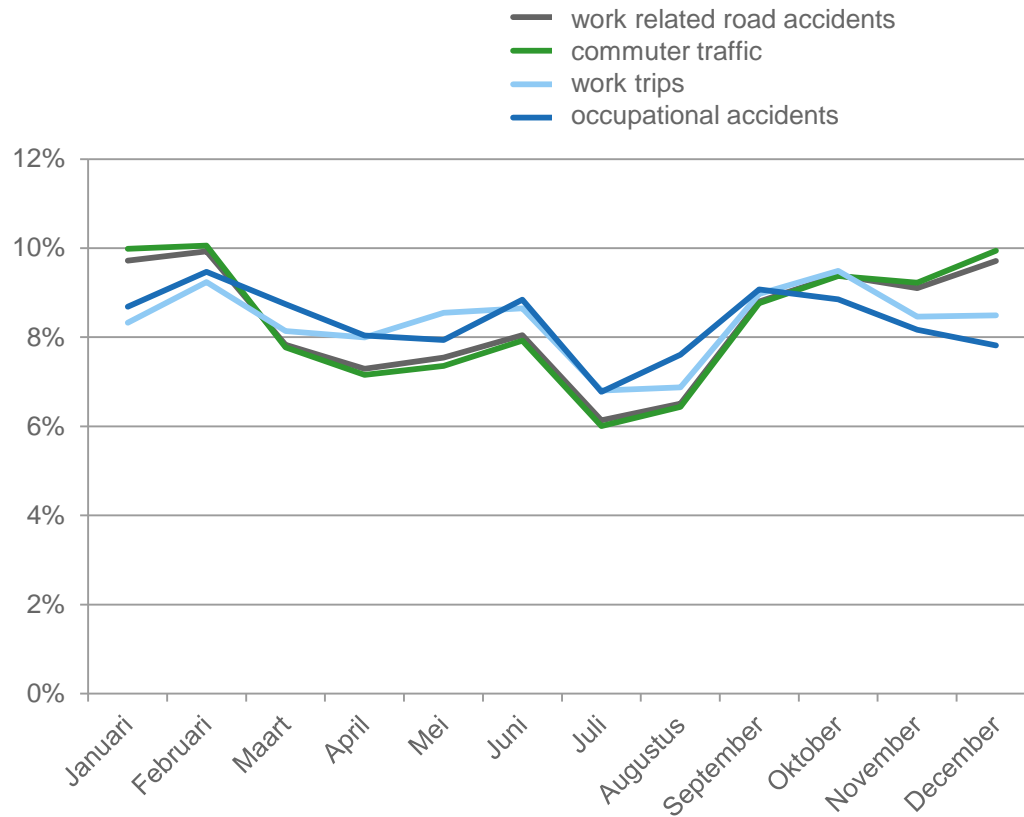
- ▶ Evolution **work related road accidents** and **occupational accidents** (2008–2012, 2008=100)



Severity <i>work related road accidents</i>	
2008	129,7
2009	136,9
2010	130,9
2011	129,6
2012	126,1

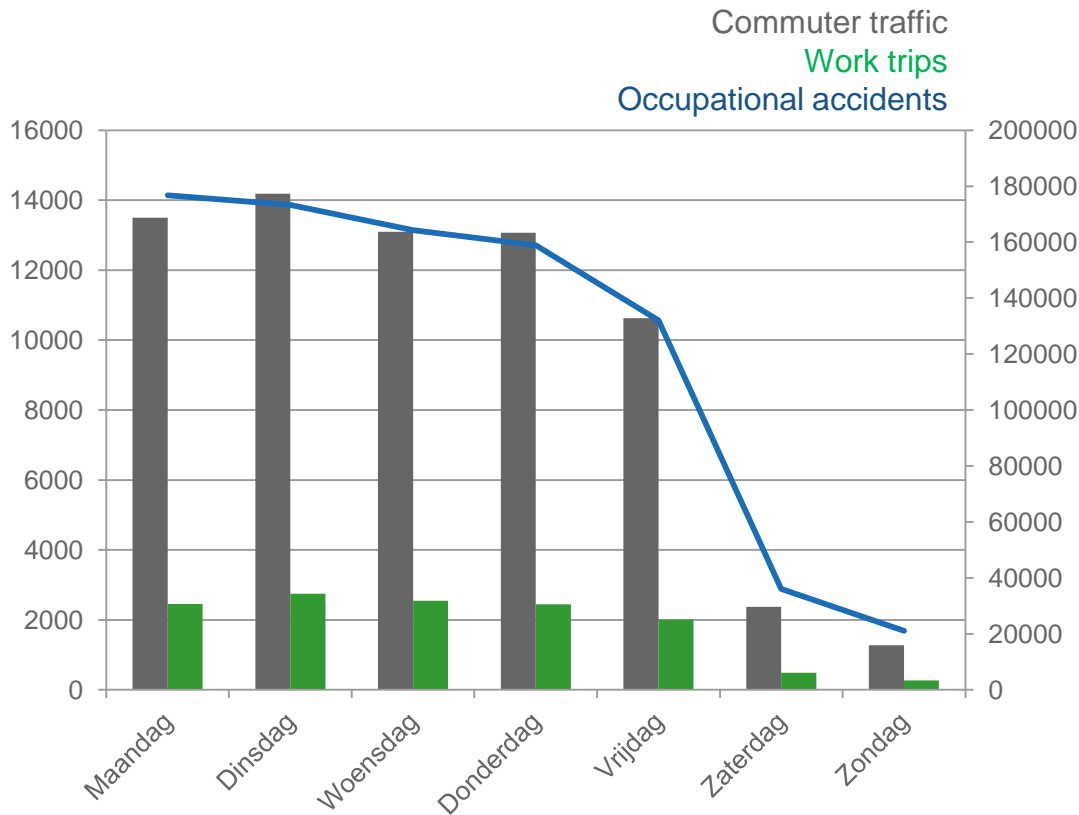
# Impact of work related road accidents

## Evolution according to the month (2008–2012)



# Impact of work related road accidents

- Evolution according to the day of the week (2008–2012)



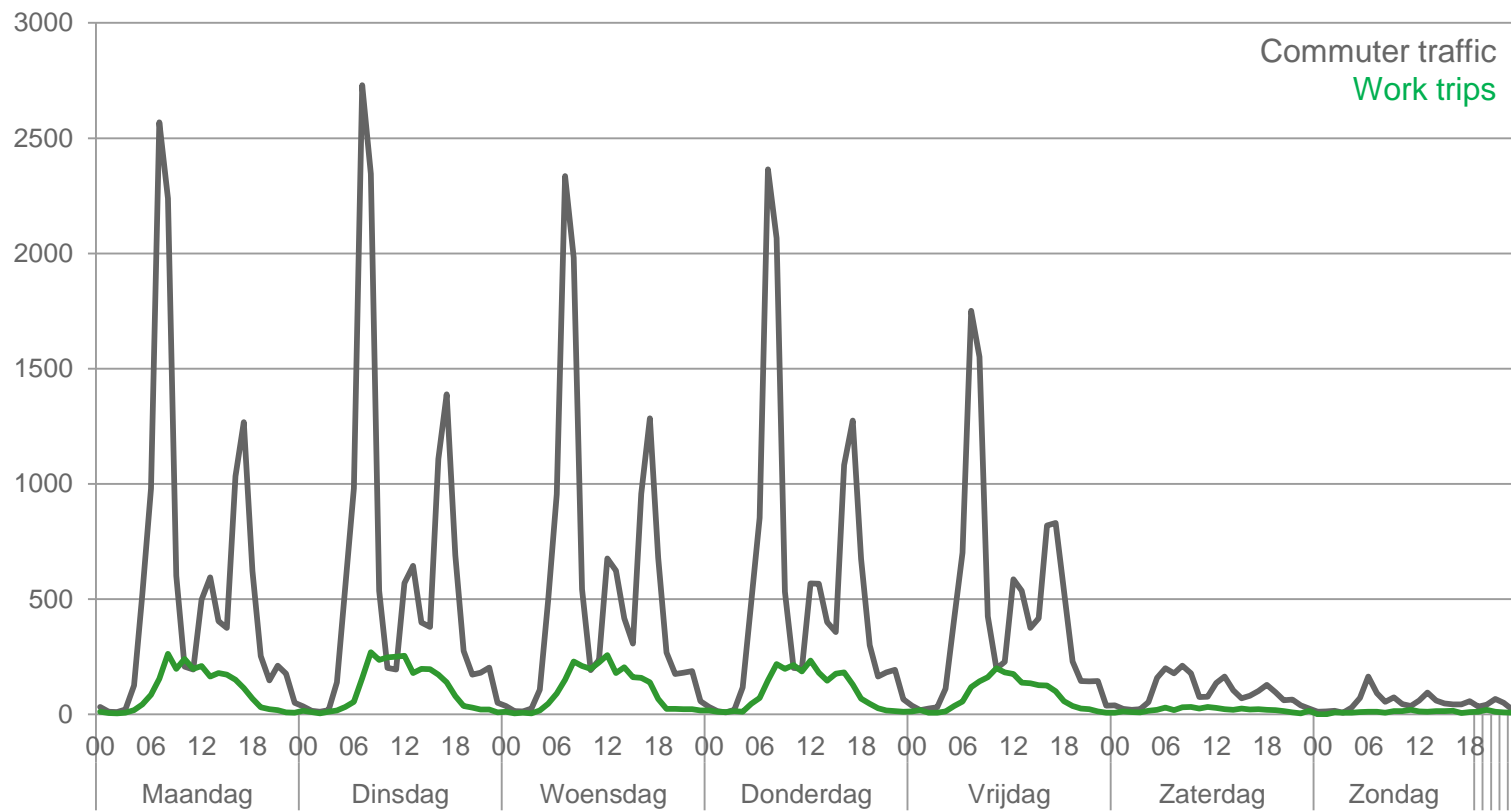
## Severity *work related road accidents*

Day of the week	125,6
Night of the week	155,4
Weekend day	133,2
Weekend night	189,1



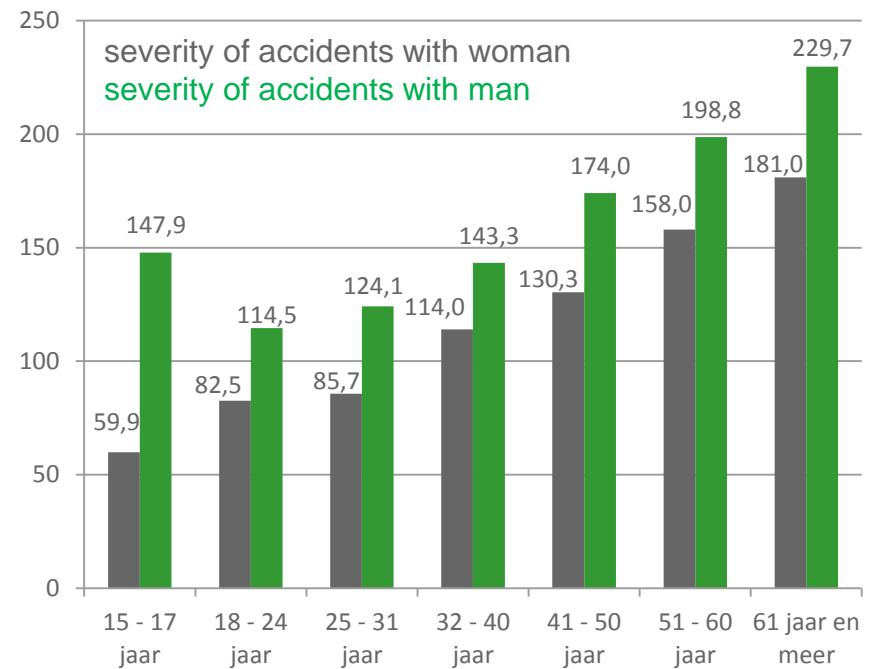
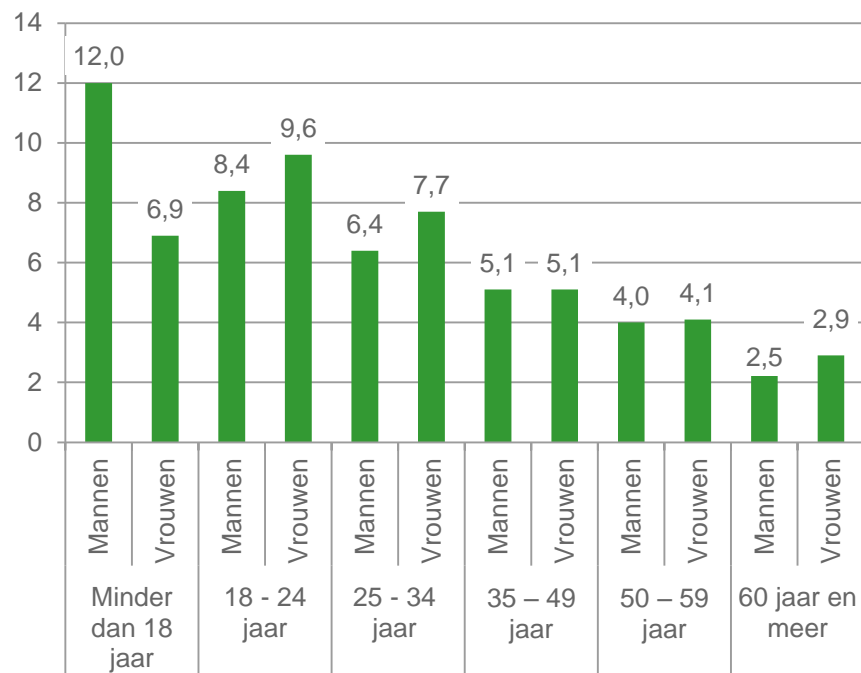
# Impact of work related road accidents

- ▶ Evolution according to the hour of the day (2008–2012)



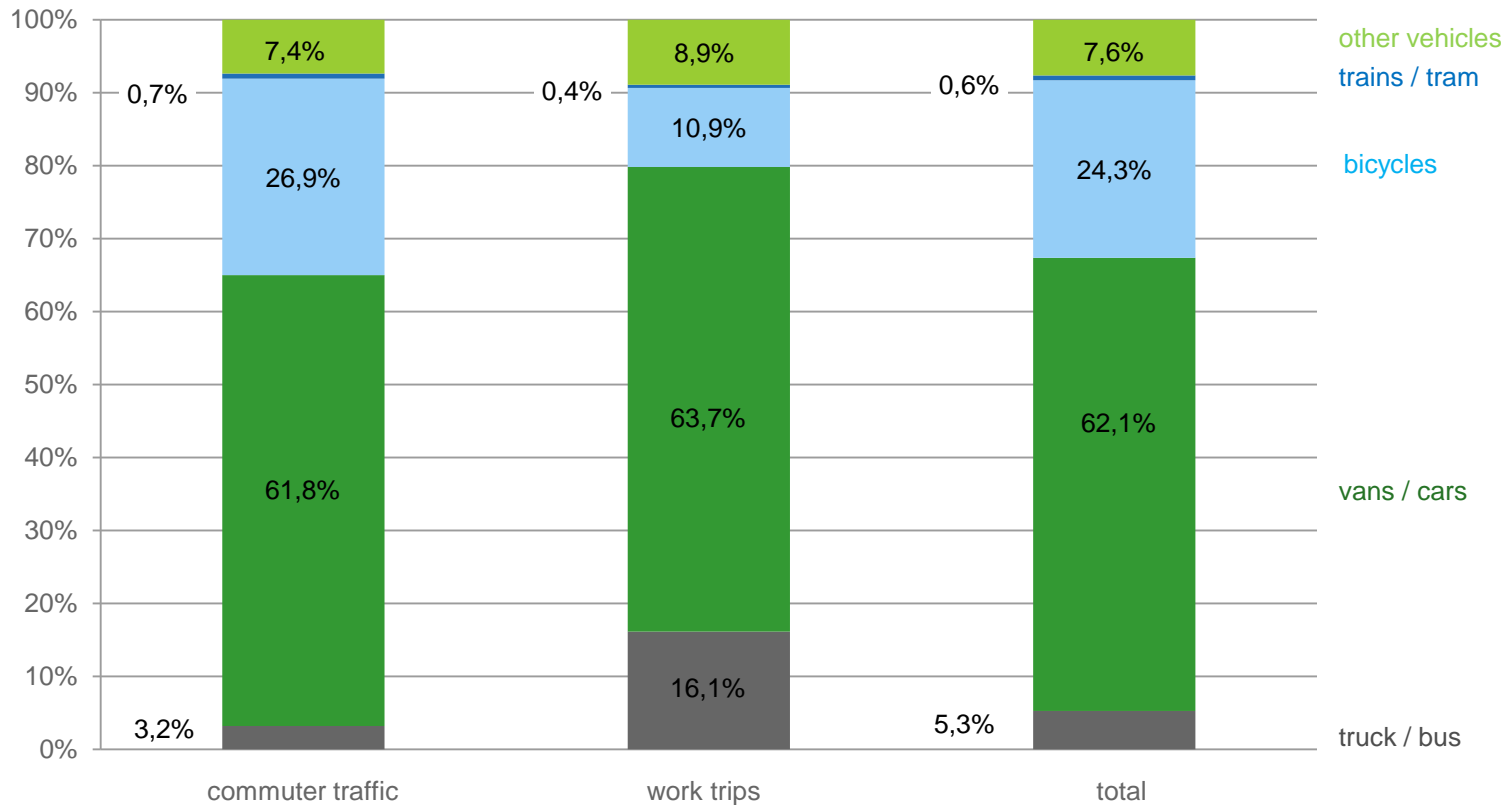
# Impact of work related road accidents

- Evolution according to age and gender (2008–2012)



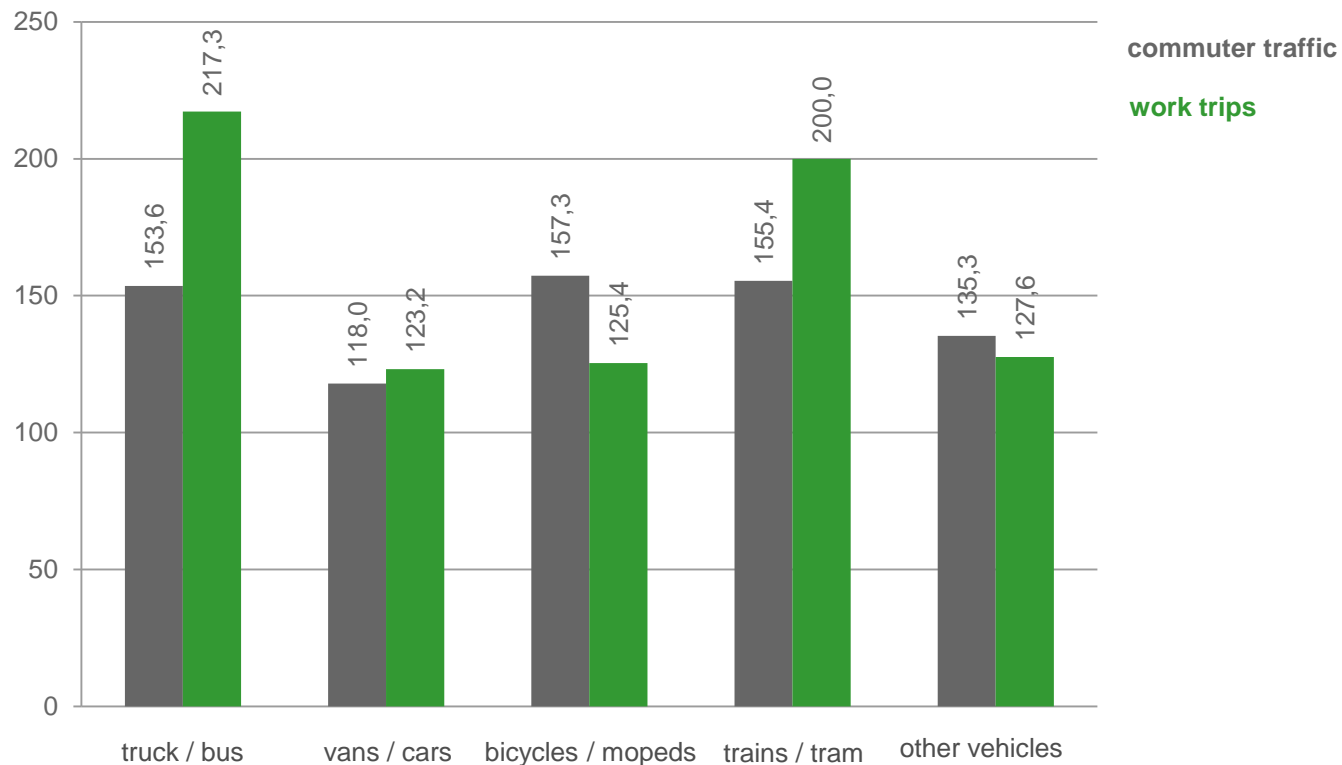
# Impact of work related road accidents

- ▶ According to involved obstacle



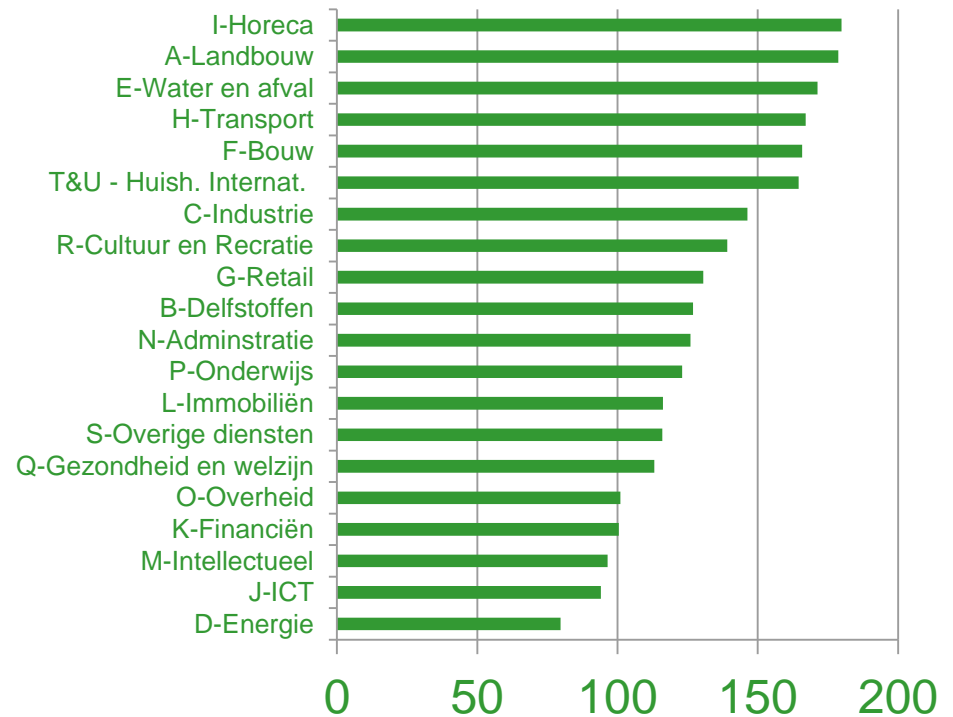
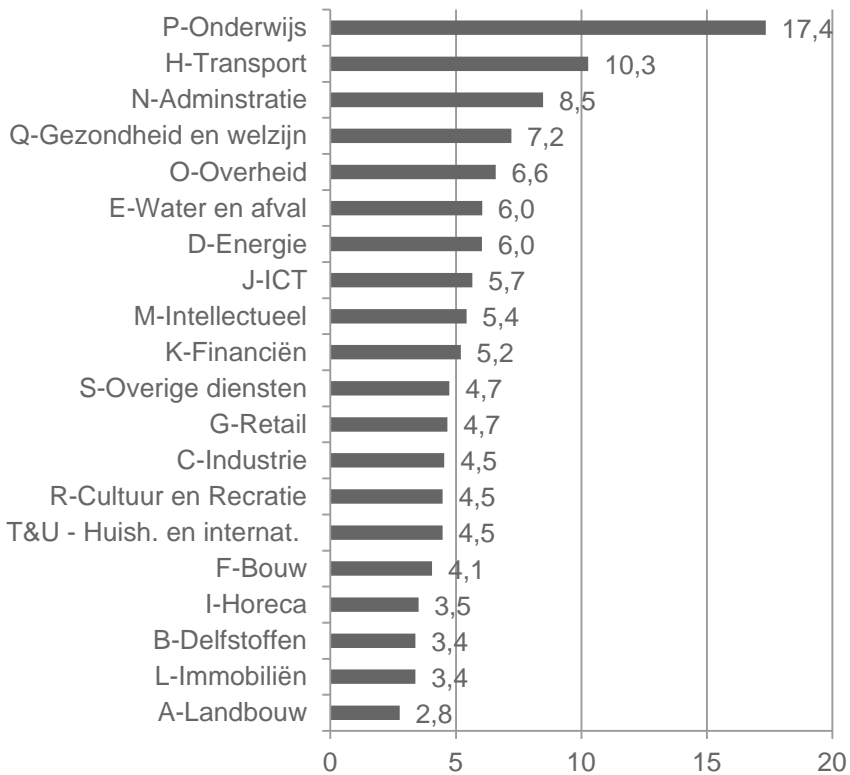
# Impact of work related road accidents

- Severity according to involved obstacle



# Impact of work related road accidents

- Work related road accidents and **severity** according to economic sector



# Impact of work related road accidents

## Conclusions and recommendations

- ▶ Evolution work related road accidents is positive, **but** less positive if severity is considered
- ▶ Decrease is not due to safer behaviour, road safety policy, or ... (economic crisis?)
- ▶ Work related road accidents are more severe at nights and weekends > need for better knowledge of road trips of the employees
- ▶ 1000/employees more young people involved
- ▶ 1000/employees higher severity amongst older people
- ▶ Road trips accidents are more severe
- ▶ Road trips accidents and commuter traffic accidents occur on different moments
- ▶ Need for more information and research on work related road accidents
- ▶ Because of high costs for society and industry they deserve specific and systematic approach

---

Thank you for your attention!

[Karin.genoe@bivv.be](mailto:Karin.genoe@bivv.be)