



ROAD SAFETY IN THE WORKPLACE

THE IMPORTANCE OF WORK RELATED ROAD SAFETY, AND HOW TO REALIZE IT



CONTENT

- Belgium / Flanders
- VSV / FFT
- The challenge of work related safety
- The Flemish way
- Projects
- Strategy and financial support
- Conclusions



BELGIUM



BELGIUM / FLANDERS



VSV / FFT



'Everybody on board!'

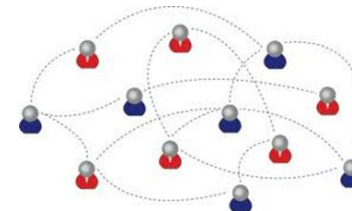
Origin →



Ambition →



Principle →



18+ (companies)

18+

Secondary schools

Primary schools



MOBILITEITSACADEMIE

VLAAMS CONGRES VERKEERSVEILIGHEID



ArcelorMittal



bpost



BOERENBOND
trouw aan land- en tuinbouw

RESULTS

Deelnemers en vormingsuren



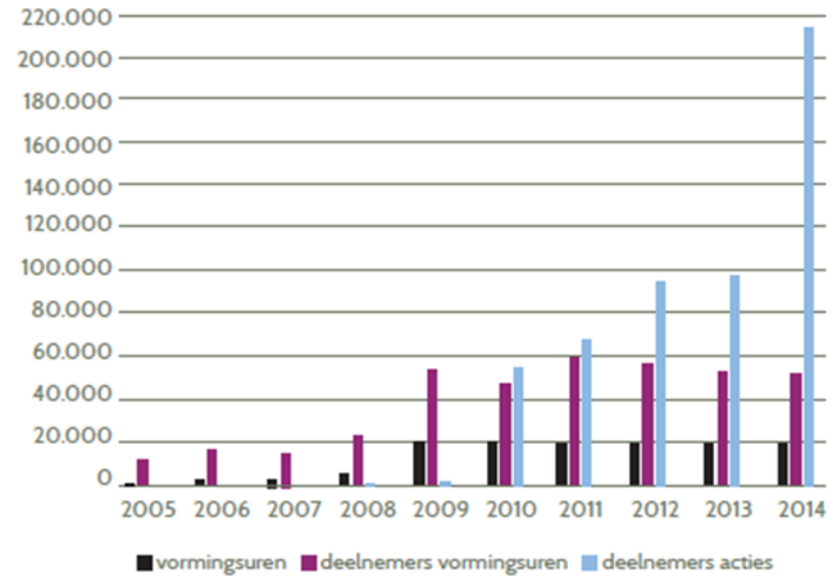
215.734 Totaal aantal deelnemers aan VSV-acties



52.892 Totaal aantal deelnemers aan VSV-vormingen

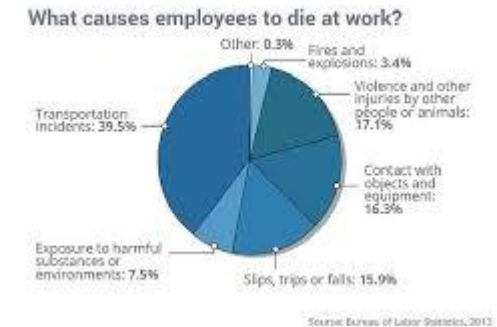


19.961 Totaal aantal vormingsuren



THE CHALLENGE OF WORK RELATED SAFETY

- *It is estimated that in Europe six out of ten work accidents resulting in death are road crashes, including both crashes while driving for work and commuting crashes. Source: Eurogip*
 - *Road safety is improving*
 - *Work related safety is improving*
 - *Work-related road accidents are not/barely improving*



THE CHALLENGE OF WORK RELATED SAFETY

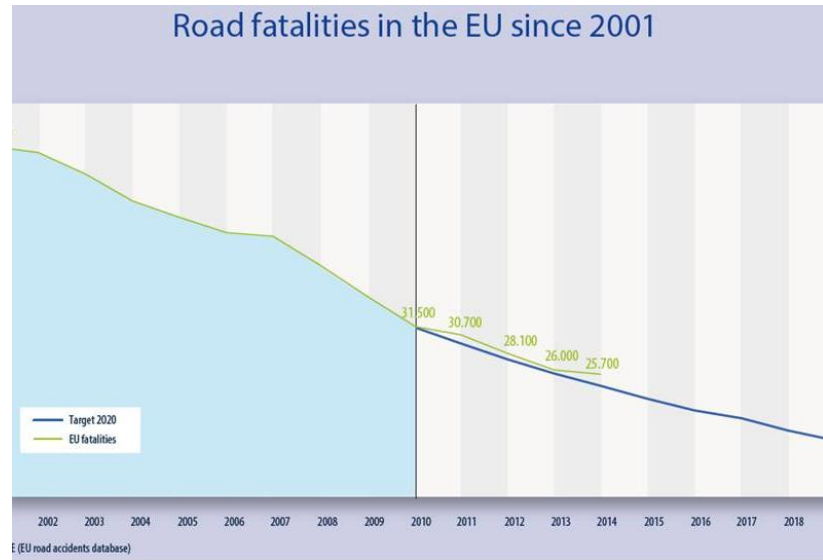
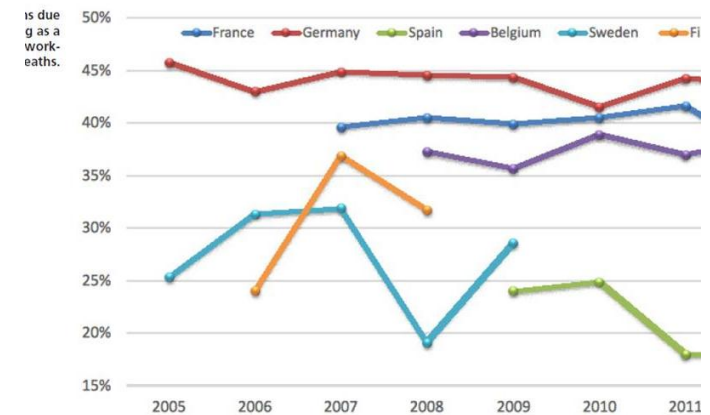
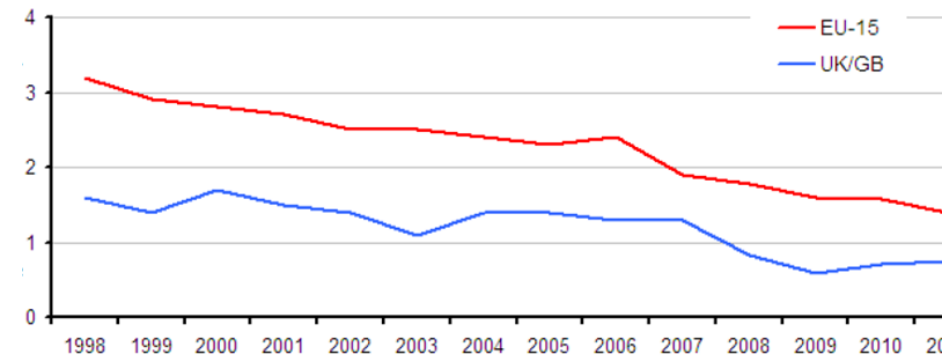


Figure 1 – Standardised incidence rates (per 100 000 workers) of fatal injuries at work in GB/UK, 1998-2011 (Eurostat) ¹



THE FLEMISH WAY WORK RELATED SAFETY

- Work-related road accidents are work accidents!!!
- So companies must address this issue
- However ...
- So, VSV helps companies and prevention advisers



PROJECTS

- Projects
 - 39001 ISO-Certificate
 - Coachings
 - Trainings
 - Checklists
 - Campaigns
 - Traffic quiz

LUIK 1 - BESCHIKBAARHEID DATA

D1 - beschikbaarheid data

- D1.1 verkeersongevallencijfers
- D1.2 verplaatsingswijze
- D1.3 verkeersovertredingen
- D1.4 dienstverplaatsingen

LUIK 2 - RISICOFACTOREN

R1 - risicofactoren algemeen

- R1.1 gevaarlijke punten

R2- risicofactoren voetgangers

- R2.1 gevaarlijke punten in omgeving
- R2.1 gevaarlijke punten op eigen terrein
- R2.2 gevaarlijke punten route

LUIK 3 - VISIE EN BESTAANDE MAATREGEL

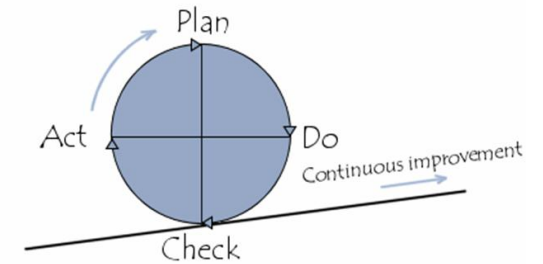
M1 - visie en strategie

- M1.1 verkeersveiligheidsplan
- M1.2 verkeersveiligheidscultuur
- M1.3 European Road Safety Charter
- M1.4 bekendheid van charter en beleid



STRATEGY AND FINANCIAL SUPPORT

- Strategy
 - Policy
 - Step by step approach
 - We help prevention advisers
 - With the support of insurance companies
- Financial support
 - Commuter Fund



Het Pendelfonds

subsidieert duurzaam
woon-werkverkeer

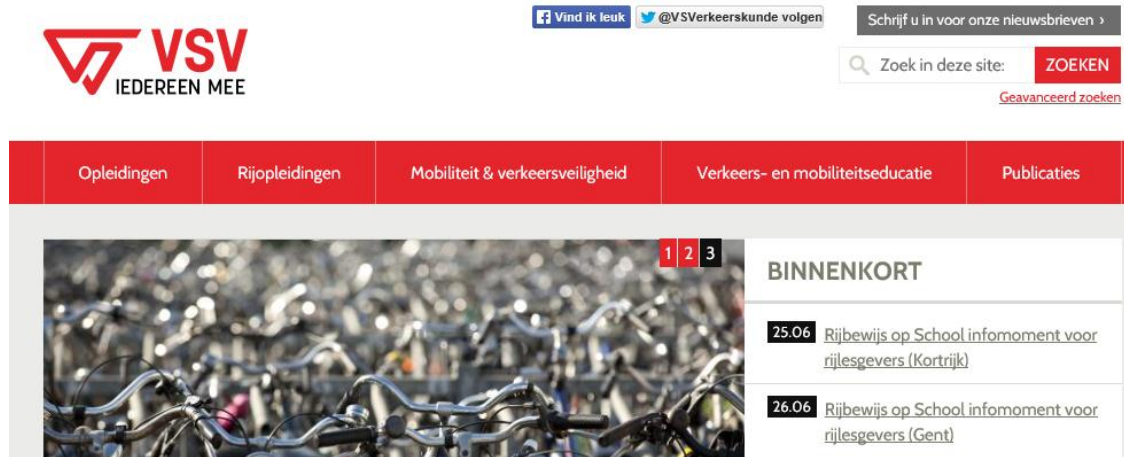


CONCLUSIONS

- Work-related road accidents are a real challenge
 - Road safety is improving
 - Work related safety is improving
- It is possible to tackle this problem
 - Awareness is growing
 - Organizations feel the pressure of insurance companies
- If we are smart enough
 - Think like a professional organization
 - Make the right partnerships
 - To be aware of financial constraints



MORE INFO



VSV (Vlaamse Stichting Verkeerskunde)
FFT (Flemish Foundation for Traffic Knowledge)

Stationsstraat 110

2800 Mechelen

Belgium

T +32 15 44 65 50

eddy.klynen@vsv.be

www.vsv.be